

The NST tester combines tensile and compression offering an available test force up to 40,000 lbs. Tensile specimens insert easily and all grips are self-acting to prevent slippage. The NST is an easy to use, ruggedly built and accurate tester for quality control in the laboratory.

Special Features

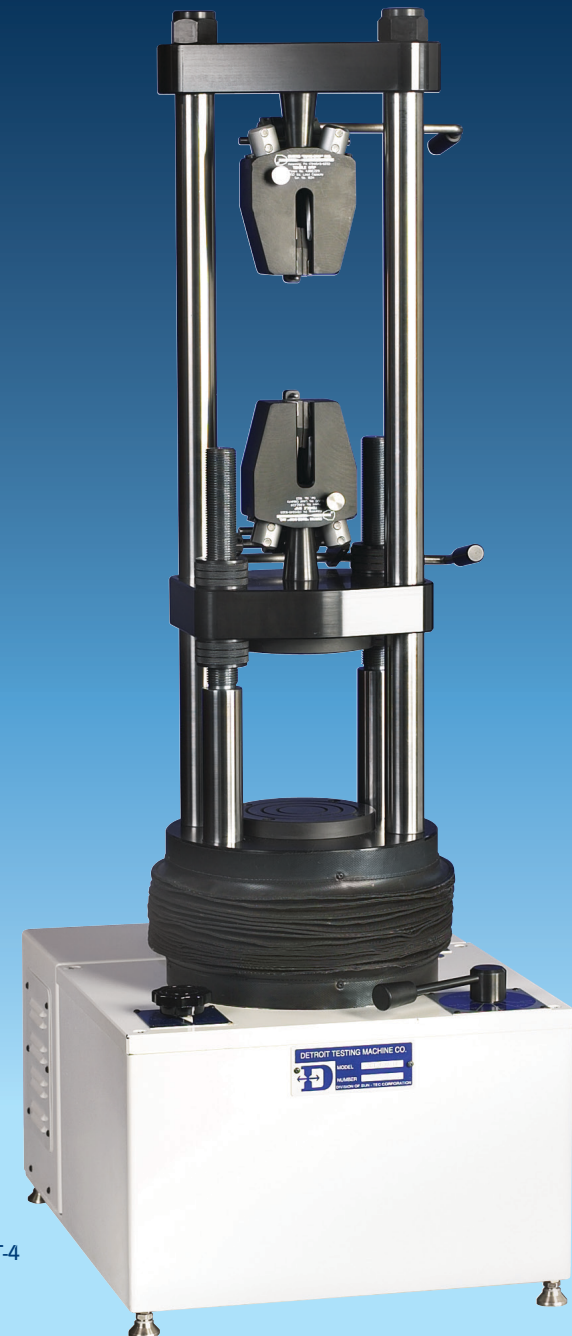
- Tension and compression in a single frame design
- Accurate strain gauge load cell design
- Live load and peak load displayed
- Pneumatic clamping grips for flat samples (optional)
- Adjustable crosshead and speed control
- Integral overload and overtravel limits
- Hydraulic power supplied and controlled in a single assembly
- Conforms to tolerances per ASTM & ISO 17025 Standards

MODEL	NST-1	NST-2	NST-4
LOAD CAPACITY	10,000	20,000	40,000
RAM TRAVEL (maximum)	6"		
TENSION OPENING	21"		
MAX SPECIMEN THICKNESS	1.125"		
MAX SPECIMEN LENGTH	12.5"		
COLUMN CLEARANCE	T 6.75" / C 5.8"		
DIMENSIONS	18" x 22" x 51"		
WEIGHT	Aprx. 750 Lbs		

OPTIONAL ACCESSORIES

Fully open crossheads, lever or pneumatic grip actuation, spherically seated self aligning, tension bars, position/deflection encoder, computer data display system, extensometers

Appearance and specifications are subject to change without prior notice.



NST-4